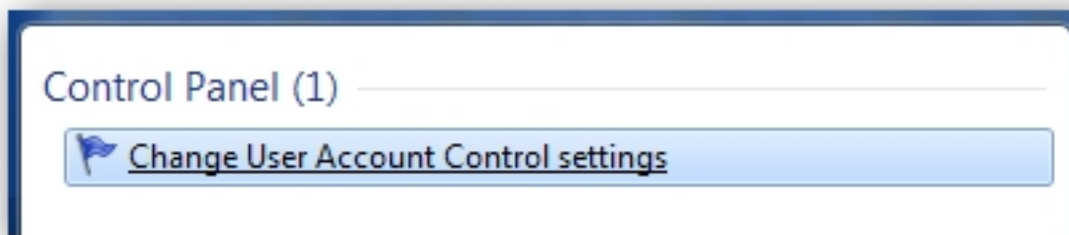


I get errors after upgrading ShedTech on Windows 7

Last revised Tuesday, 10 August 2010

If after downloading and installing an update of ShedTech on Windows 7 (32 bit or 64 bit versions), you encounter errors while starting the software, it is likely that you have the Windows 7 UAC (User Account Control) turned on. The simplest solution to this problem is to just turn the UAC off.

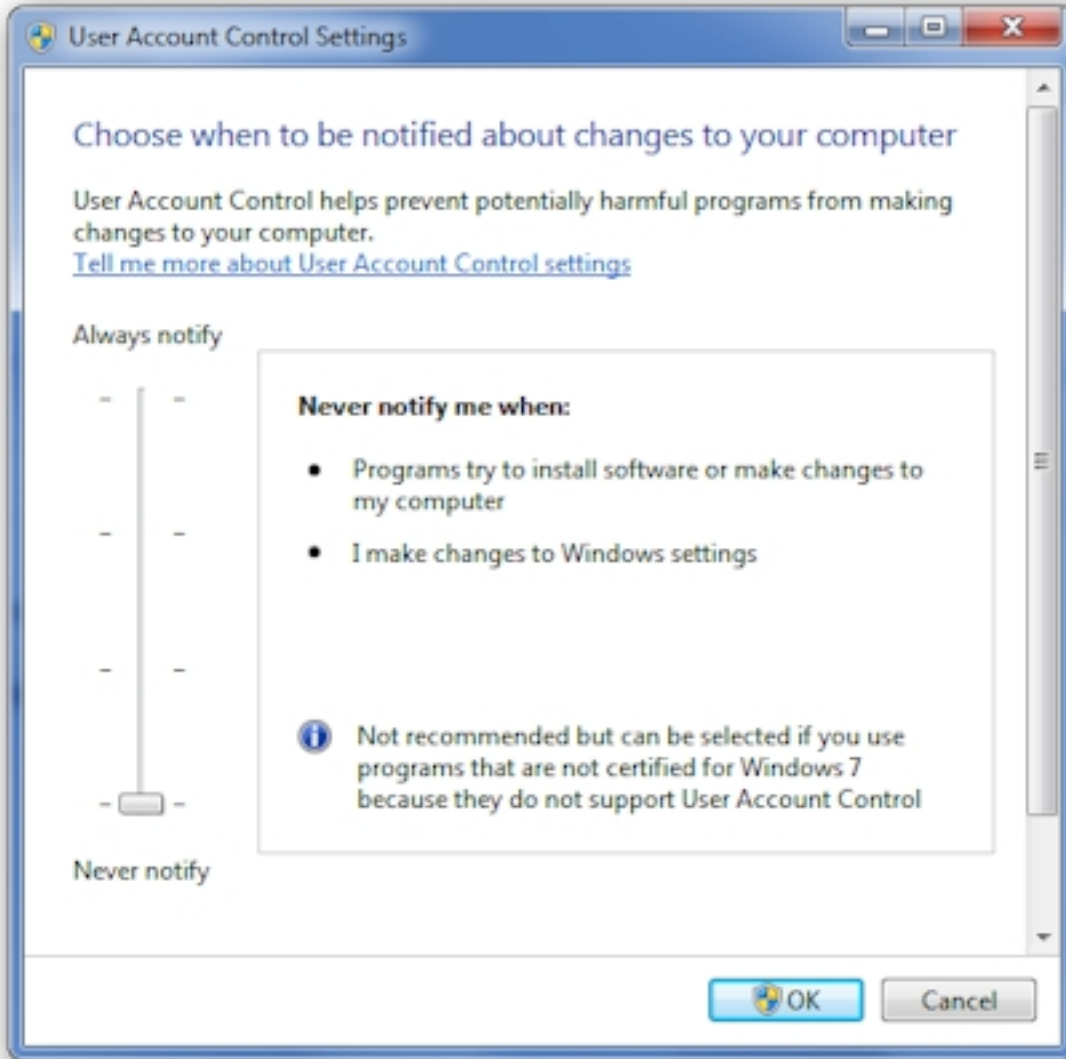
To turn off the Windows 7 UAC, click on the Windows start menu, and in the textbox that appears directly above it type in the characters: "**UAC**". The following match will appear above the text field that you need to click on. You may get another prompt to allow the operation which you need to do (because you are actually doing it).



Clicking on this option will load the following window. You will need to drag the slider bar to the bottom as pictured and then click the **OK** button. You will then be required to restart your computer.

I get errors after upgrading ShedTech on Windows 7

Last revised Tuesday, 10 August 2010



After you always turn the UAC back on with the ShedTech tray icon. After you have logged in,